

# Oxford City Planning Committee Presentation

[www.oxford.gov.uk](http://www.oxford.gov.uk)



**Reference Number:**

3

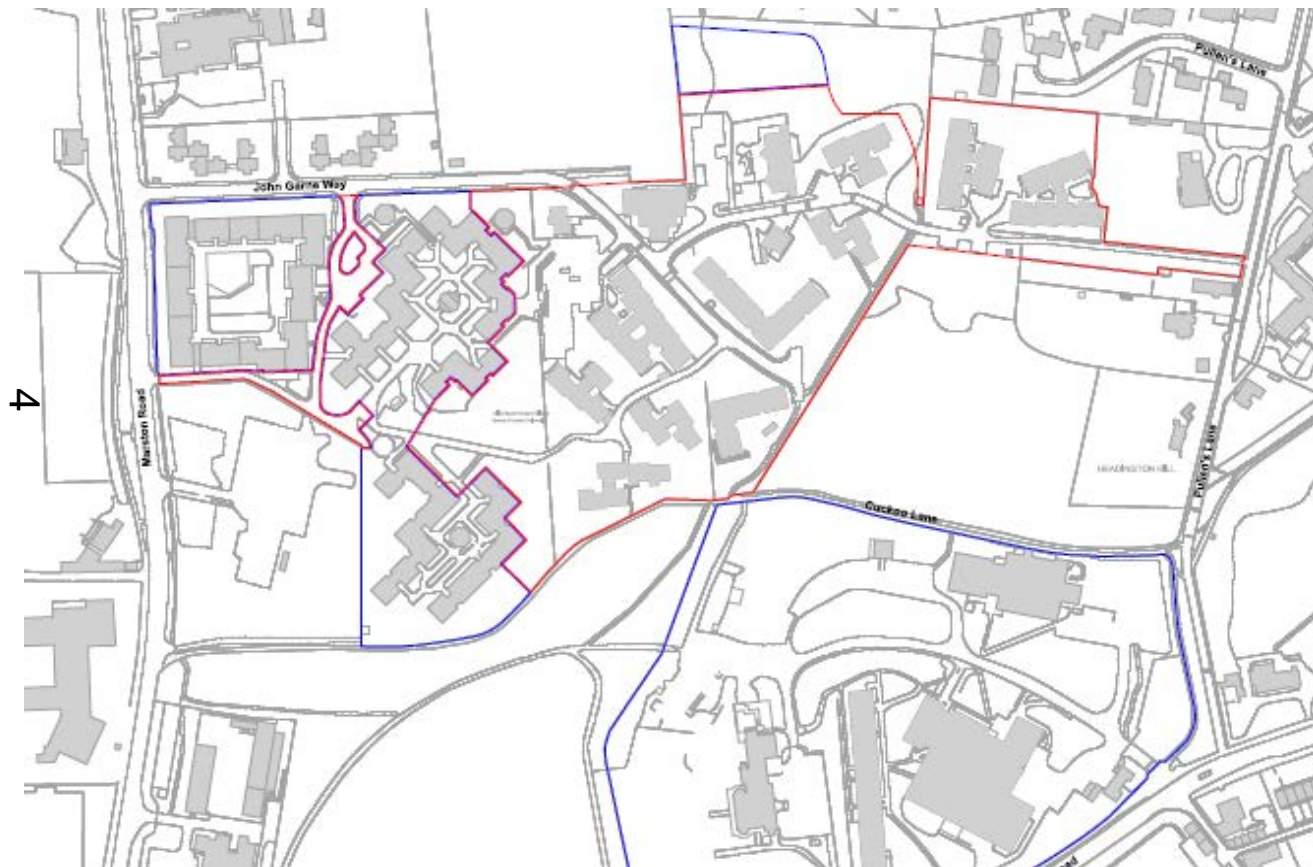
**21/01185/FUL**

**Site Address:**

**Clive Booth Student Village**



# Site Plan

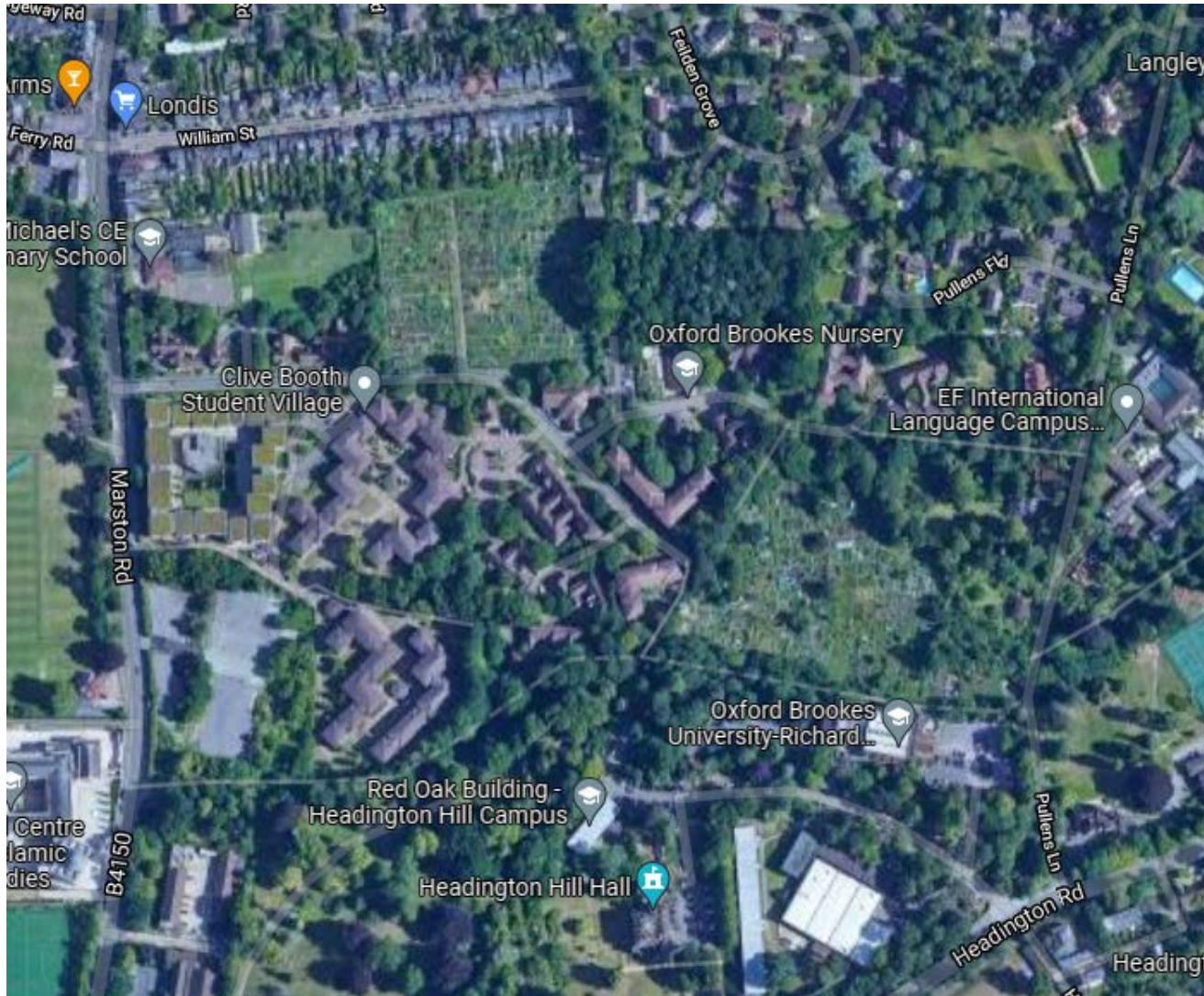


[www.oxford.gov.uk](http://www.oxford.gov.uk)



# Aerial Photo

5





# Demolition Plan

[www.oxford.gov.uk](http://www.oxford.gov.uk)



9



# Landscape Context

7



[www.oxford.gov.uk](http://www.oxford.gov.uk)



# Site Wide Topography

8





# Proposed Site Layout



[www.oxford.gov.uk](http://www.oxford.gov.uk)



# Building Typologies

10



[www.oxford.gov.uk](http://www.oxford.gov.uk)



**OXFORD  
CITY  
COUNCIL**





# Distribution of Uses



11



# New Green Infrastructure

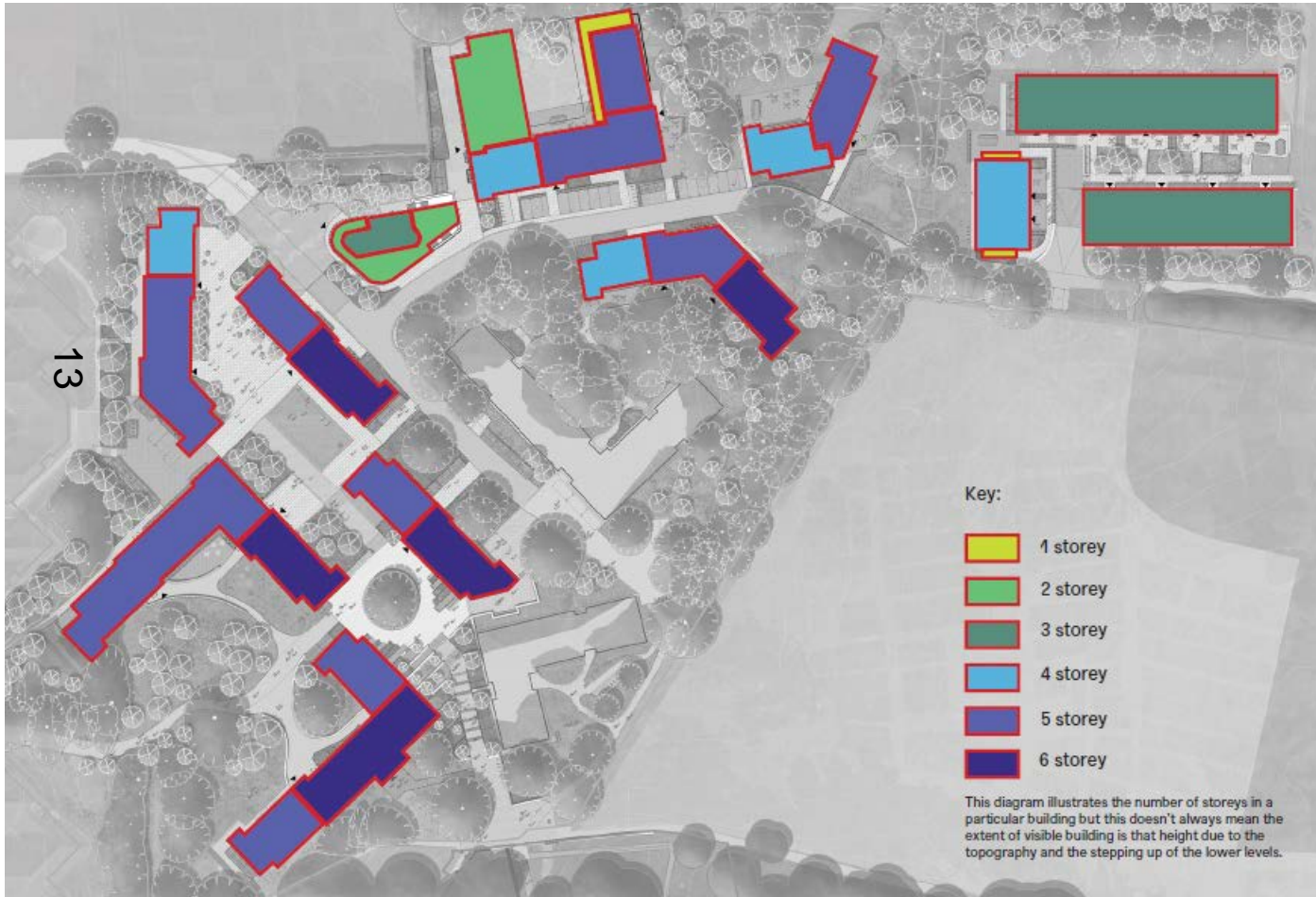
12



[www.oxford.gov.uk](http://www.oxford.gov.uk)



# Building Massing





# Façade sketches

14



[www.oxford.gov.uk](http://www.oxford.gov.uk)



# Example façade treatment



[www.oxford.gov.uk](http://www.oxford.gov.uk)



# Rendered Façade Images

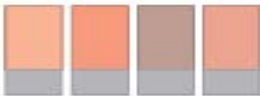


16

## Range of building tones

Clearly visible in the proposal of four different tones, and their various applications to different buildings or areas of a building, is the relationship of outdoor elements. The final colour selection will be based on practical experience and our ability to maintain the building's look across all elements, including trees, walls, and furniture.

The design process was a range of different materials, which included a mix of brick, stone, and render. The final selection of the different tones that are available in the application scheme.





# Building 1



1 North Elevation  
1:20



2 East Elevation  
1:20



3 South Elevation  
1:20



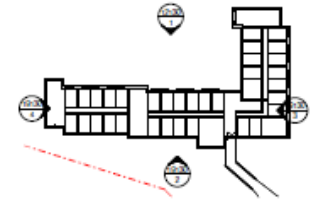
4 West Elevation  
1:20

17

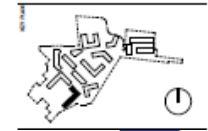
rd.gov.uk



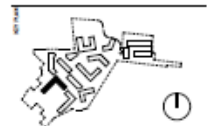
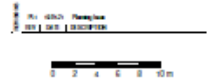
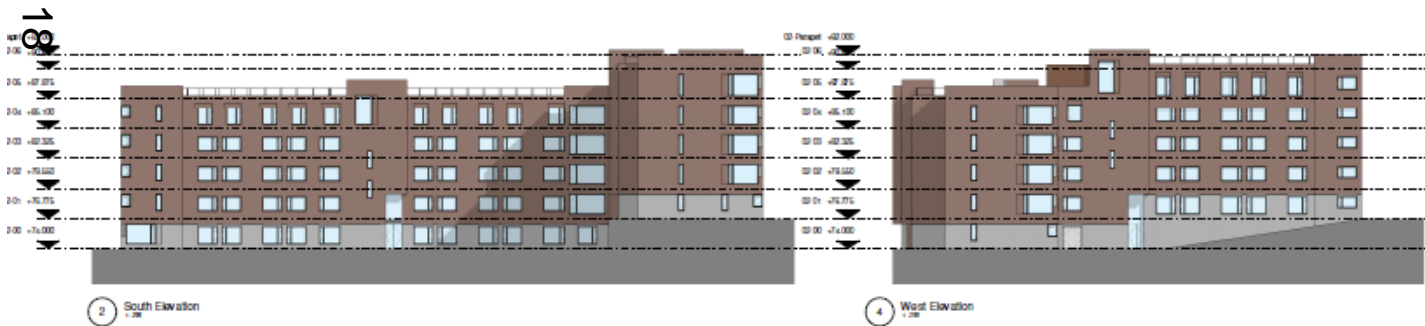
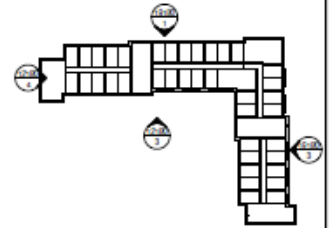
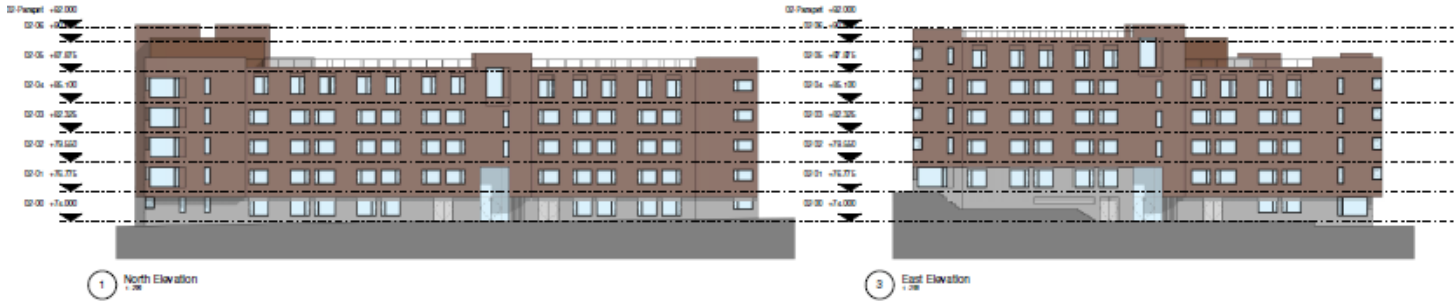
RD  
Y  
CIL



RD Y CIL  
RD Y CIL



# Building 2



# Building 3



1 North East Elevation  
1:50



2 East Elevation  
1:50



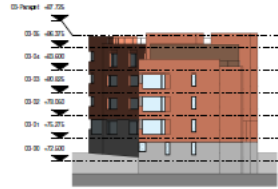
3 West Elevation  
1:50



4 South West Elevation  
1:50

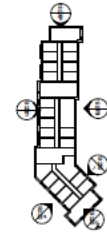


5 South East Elevation  
1:50



6 North Elevation  
1:50

ALL DIMENSIONS TO BE REPORTED TO THE ARCHITECT IMMEDIATELY  
COPYRIGHT MICA ARCHITECTS LTD ©



1:1000 Planning  
2013.02.13.01000000



PLANNING	
<b>MICA</b>	
125, Leamington Road, Leamington Spa, CV31 2JH	
01922 262200 Fax 01922 262201	
www.mica-architects.co.uk	
© MICA South Bucks Village	
Building 3 - Classroom	

www.oxford.gov.uk

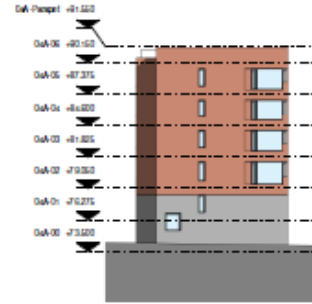




# Building 4A



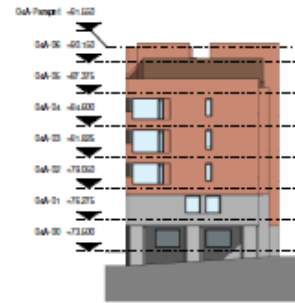
1 North East Elevation  
1:20



2 South East Elevation  
1:20



3 South West Elevation  
1:20



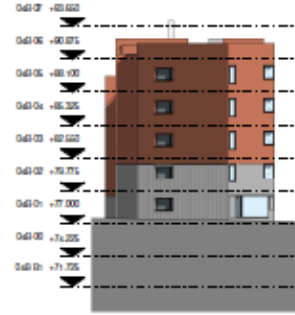
4 North West Elevation  
1:20



# Building 4B



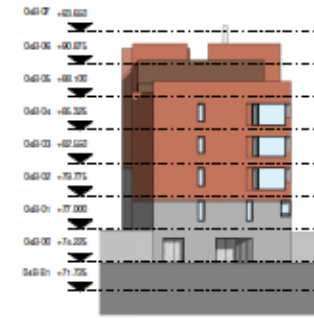
1 North East Elevation  
1:20



2 South East Elevation  
1:20

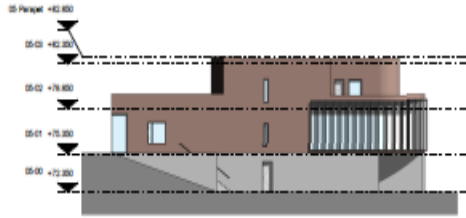


3 South West Elevation  
1:20

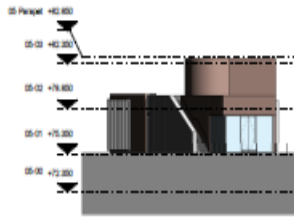


4 North West Elevation  
1:20

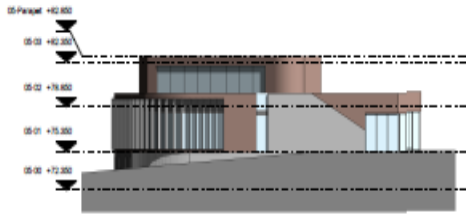
# Building 5 Welcome Building



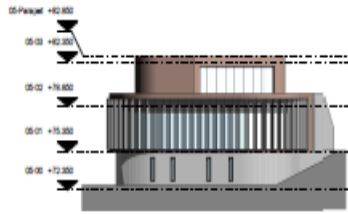
1 North Elevation  
1:50



2 East Elevation  
1:50



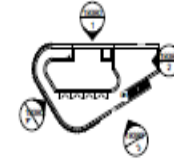
3 South East Elevation  
1:50



4 South West Elevation  
1:50

22

.gov.uk



OXFORD  
CITY  
OUNCIL

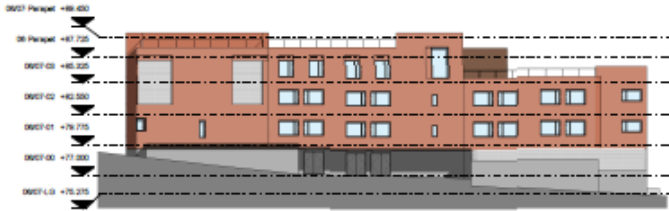


All rights reserved  
2017 0115 | 01875010





# Building 6/7



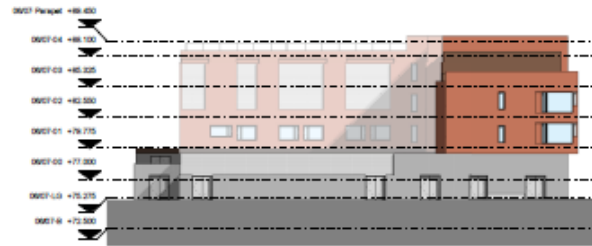
1 North Elevation  
1:50



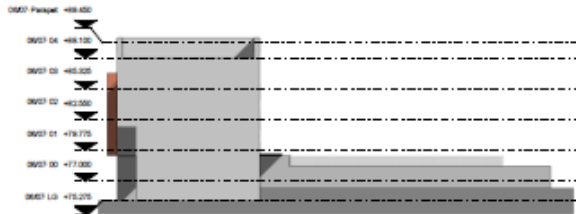
2 East Elevation  
1:50



3 South Elevation  
1:50



4 West Elevation  
1:50



5 Inner East Elevation  
1:50



6 Inner West Elevation  
1:50



# Building 8



1 North East Elevation



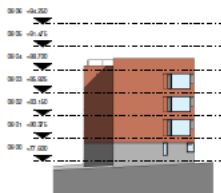
2 North Elevation



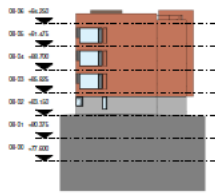
3 South Elevation



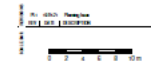
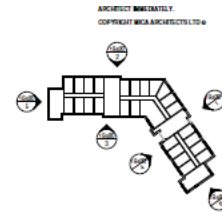
4 South West Elevation



5 West Elevation



6 South East Elevation



PLANNING	
<b>MICA</b>	
111, Market Street, Oxford, OX1 1DT Tel: 01865 207123 Fax: 01865 207124 www.mica-architects.co.uk	
Client: Oxford University	
Building: Proposed Extension	
712-MICA-01-XX-DR-A-19480 PL1	
PL	DR
10/11/11	10/11/11



# Building 9



1 North East Elevation



2 North West Elevation



3 North North West Elevation



4 South West Elevation

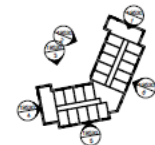


5 South South East Elevation



6 South East Elevation

DO NOT SCALE FROM THIS DRAWING.  
CONTRACTOR TO CHECK ALL DIMENSIONS ON SITE.  
ANY DISCREPANCIES TO BE REPORTED TO THE  
RELEVANT ARCHITECTS.  
COPYRIGHT MICA ARCHITECTS LTD ©

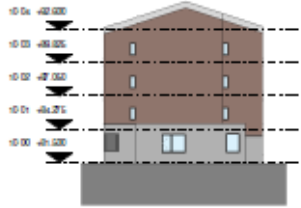


1:100  
1:500  
1:1000





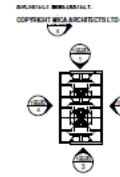
# Building 10



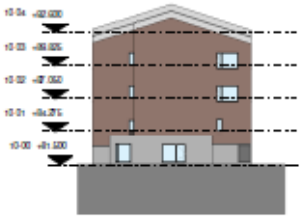
1 North Elevation  
1:200



2 East Elevation  
1:200



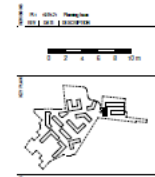
26



3 S-10-ME-Planning  
1:200



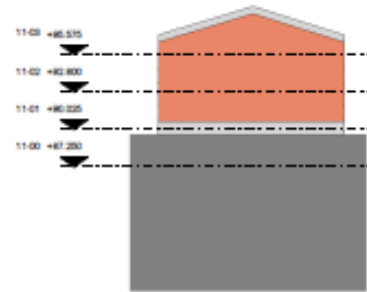
4 West Elevation  
1:200



# Building 11



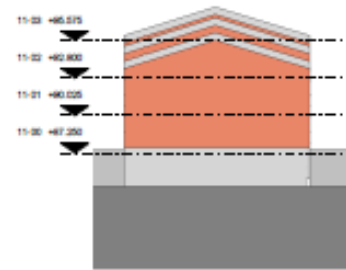
1 North Elevation  
1:50



2 East Elevation  
1:50



3 South Elevation  
1:50



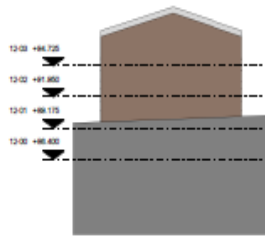
4 West Elevation  
1:50



# Building 12



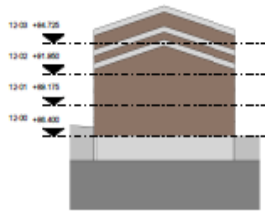
1 North Elevation  
1:20



2 East Elevation  
1:20



3 South Elevation  
1:20



4 West Elevation  
1:20

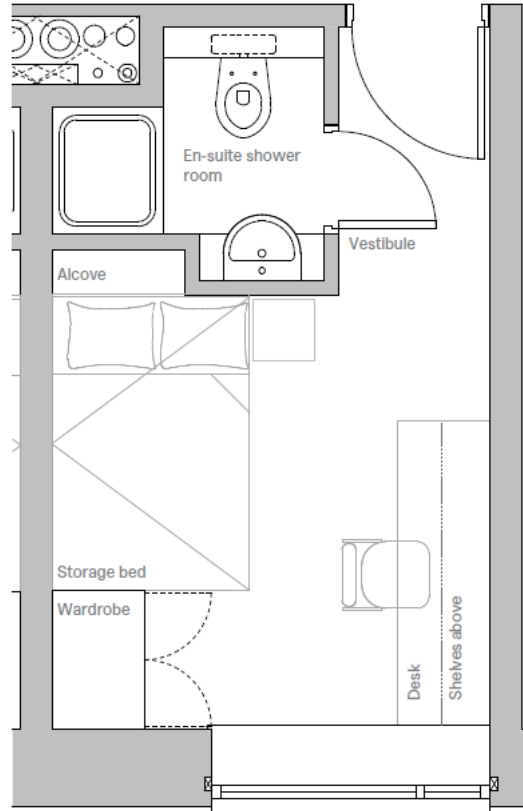


0 1 2 3 4 5 6 7 8 9 10  
 METRES

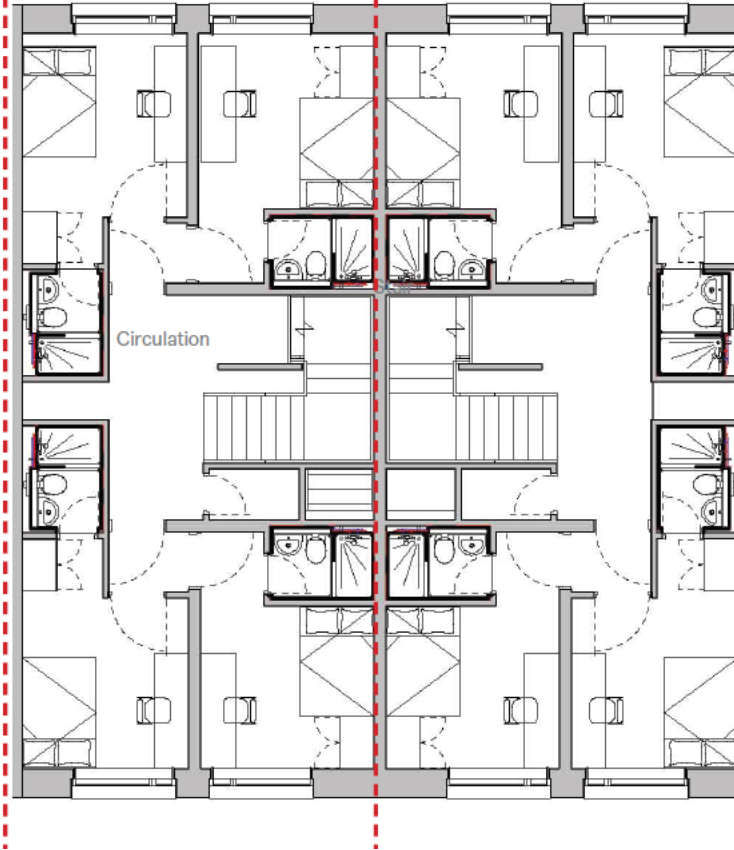
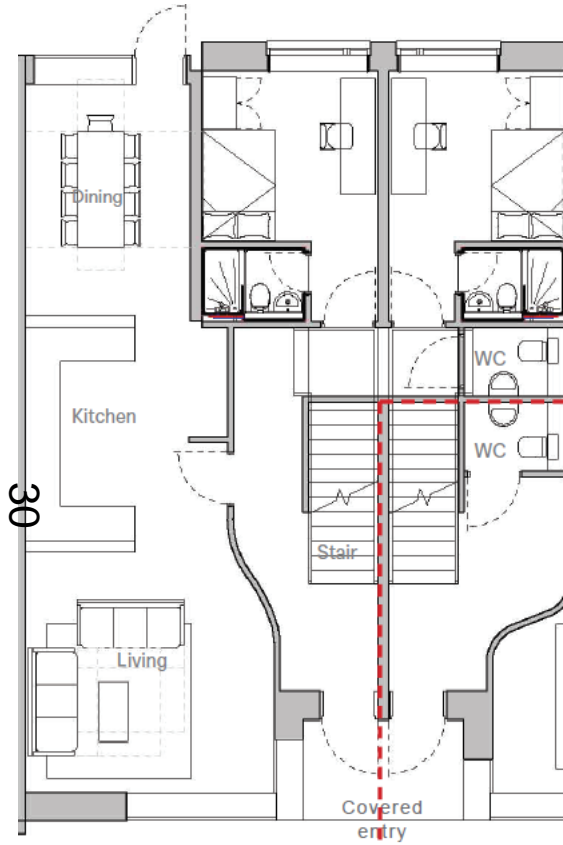
PLANNING  
**MICA**  
 03 Oxford Road, Great Clarendon, OXF 12A  
 T: 01865 206200 F: 01865 206100  
 info@micaarchitects.com www.micaarchitects.com  
 © City of Oxford 2018



# Typical Floor Plan Apartment



# Typical Townhouse Floorplan



[www.oxford.gov.uk](http://www.oxford.gov.uk)



# Visualisations

31



[www.oxford.gov.uk](http://www.oxford.gov.uk)





# Visualisations



[www.oxford.gov.uk](http://www.oxford.gov.uk)



# From John Garne Way Allotment

[xford.gov.uk](http://xford.gov.uk)



OXFORD  
CITY  
COUNCIL



33





# Proposed view JGW Allotments

oxford.gov.uk





35





# Pullens Lane Allotments Existing

[www.oxford.gov.uk](http://www.oxford.gov.uk)



# Pullens Lane Allotments Proposed



[www.oxford.gov.uk](http://www.oxford.gov.uk)



**OXFORD  
CITY  
COUNCIL**



# St Marys Tower Existing



38



[www.oxford.gov.uk](http://www.oxford.gov.uk)



# St Marys Tower Existing



39

[www.oxford.gov.uk](http://www.oxford.gov.uk)



**OXFORD  
CITY  
COUNCIL**





# Proposed View St Marys Tower

[www.oxford.gov.uk](http://www.oxford.gov.uk)



40





# Boars Hill Existing

[www.oxford.gov.uk](http://www.oxford.gov.uk)



# Boars Hill Proposed

42



[www.oxford.gov.uk](http://www.oxford.gov.uk)



# Raleigh Park Existing

rd.gov.uk



RD  
Y  
CIL



43



# Raleigh Park Proposed

[www.oxford.gov.uk](http://www.oxford.gov.uk)





# Wytham Wood Existing



45





# Wytham Wood Proposed

[www.oxford.gov.uk](http://www.oxford.gov.uk)



46





# Refused scheme façade and views



48



[www.oxford.gov.uk](http://www.oxford.gov.uk)



**OXFORD  
CITY  
COUNCIL**





# Previous refused scheme



# Current proposed scheme



# Daylight/Sunlight December

## Existing

## Proposed



8 am



8 am



10 am



10 am

[www.oxford.gov.uk](http://www.oxford.gov.uk)



**OXFORD  
CITY  
COUNCIL**



50



# Daylight/Sunlight December

## Existing

## Proposed



12 noon



12 noon



3 pm



3 pm

[www.oxford.gov.uk](http://www.oxford.gov.uk)



OXFORD  
CITY  
COUNCIL



# Daylight/Sunlight March Equinox

## Existing

## Proposed



3 am

52



10 am



8 am



10 am

[www.oxford.gov.uk](http://www.oxford.gov.uk)



OXFORD  
CITY  
COUNCIL





# Daylight/Sunlight March Equinox

## Existing

## Proposed



[www.oxford.gov.uk](http://www.oxford.gov.uk)



**OXFORD  
CITY  
COUNCIL**



This page is intentionally left blank